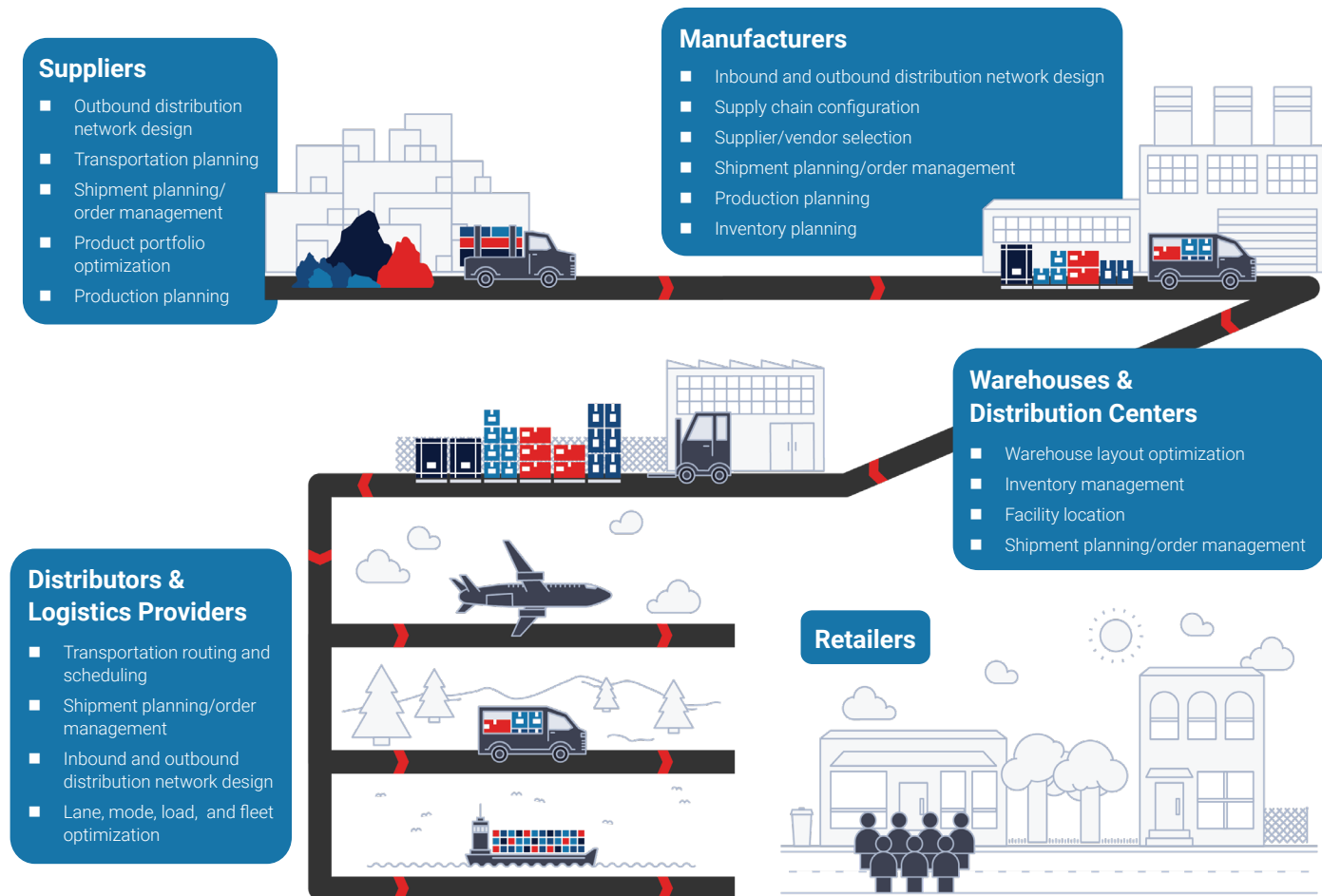


Optimizing Logistics Operations Across Your End-To-End Supply Chain

With mathematical optimization technologies, 3PL and in-house logistics providers can operate in the most efficient manner possible – so that they can minimize costs and maximize on-time, in-full (OTIF) delivery performance.

Discover the opportunities for logistics optimization across your end-to-end supply chain.



Business Benefits

- Enhanced end-to-end supply chain visibility and agility
- Optimal strategic, tactical, and operational decision making
- Improved resource utilization
- Reduced operating costs
- Superior OTIF performance, service-level excellence, and customer satisfaction
- Lower safety stock inventory levels and fewer stock-outs
- Greater efficiency and profitability